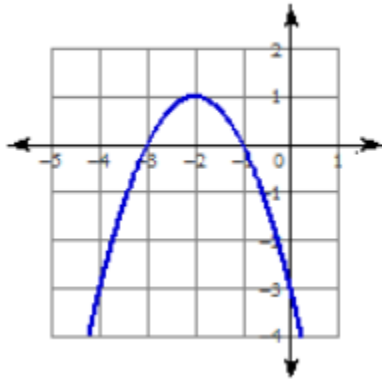


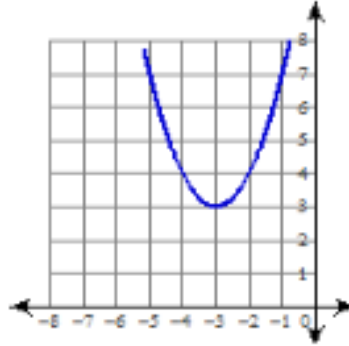
**Solving Quadratics with Graphing and Square Root Method.**

Use the related graph of each equations to determine its solutions.

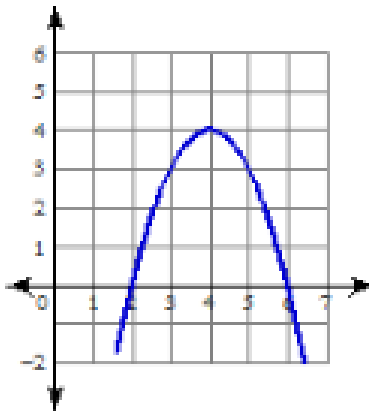
1.  $f(x) = -x^2 - 4x - 3$



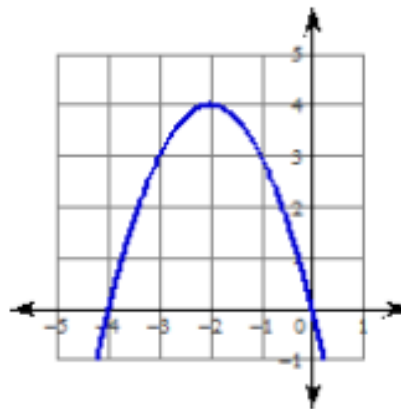
2.  $y = x^2 + 6x + 12$



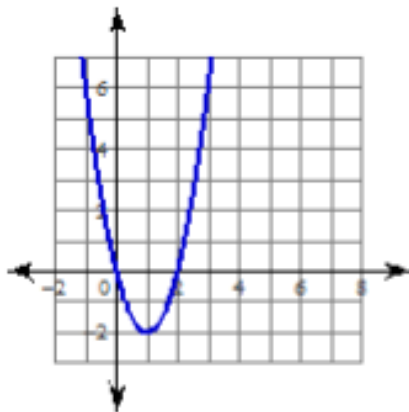
3.  $f(x) = -x^2 + 8x - 12$



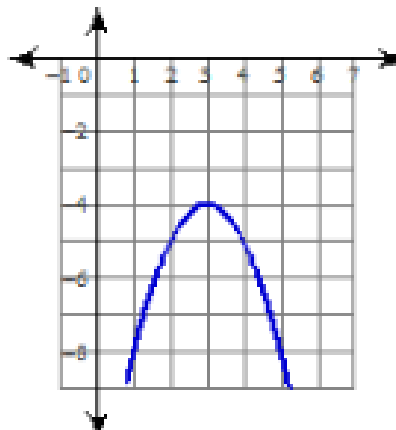
4.  $f(x) = -x^2 - 4x$



5.  $y = 2x^2 - 4x$



6.  $f(x) = -x^2 + 6x - 13$



**Solve each equation.**

7.  $m^2 - 36 = 0$

8.  $y^2 - 225 = 0$

9.  $4d^2 + 16 = 16$

10.  $t^2 = 144$

11.  $3x^2 + 15 = 0$

12.  $2x^2 - 8 = 0$

13.  $(x+4)^2 = 16$

14.  $2(x-1)^2 = 12$

15.  $-3(x-4)^2 = 6$

16.  $-2(x+2)^2 = -10$

17.  $(x+7)^2 = 0$

18.  $-3(x+4)^2 + 3 = 0$