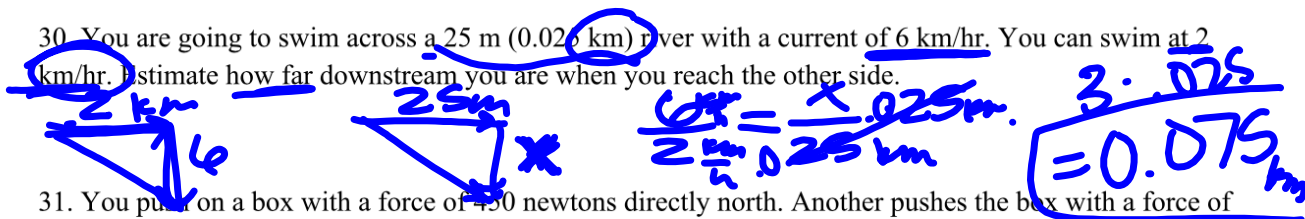


Vectors Quiz TODAY!

Pull out Review and turn to #30

30. You are going to swim across a 25 m (0.025 km) river with a current of 6 km/hr. You can swim at 2 km/hr. Estimate how far downstream you are when you reach the other side.



31. You pull on a box with a force of 450 newtons directly north. Another pushes the box with a force of 600 newtons directly east. What is the resultant force?

32. On a bike ride Bobbie rides 40 miles west, then 30 miles south, then 25 miles west and finally 40 miles south. Using vectors on a coordinate grid, what was her total displacement in component form?

33. You are on an elevator that is plummeting toward the ground at 32 m/s and you jump up right before it hits the ground. You jump upward with a velocity of 4 m/s. At what speed do you hit the ground?

Vectors ws graded on completion since
we did most of it as a class

Finished it 10/10

Standards 6C Opportunity 1

Carefully follow directions and double check answers!

No Phones

When finished:

Hand in the basket
Finish missing hw
Read

